

PROFESSIONAL INTERACTIVE LIDAR POELIDAR-F1



INTRODUCTION

POELIDAR-F1 is a high-performance indoor professional interactive radar developed by Shanghai CPJRobot Co., Ltd specifically for the interactive field.

Traditional Lidar is designed for the robot industry and some industrial applications. Its product form and parameter index are not suitable for the interactive field. For a long time, the use of the traditional radar in the interactive field is very awkward, there are a series of problems such as installation and debugging difficulties, low touch accuracy, short service life, index parameters can not be referred to, software docking chaos and so on. The emergence of POELIDAR professional interactive radar has solved a number of pain points in the industry at one stroke.

FEATURES



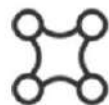
TOF laser ranging technology



30FPS



IP65 Waterproof and dustproof



Stable multi-lidarcascade



Accurate parameter



easy to configure



PARNMETERS

RANGING PARAMETERS

Ranging principle	TOF (time of flying)
Radius	>11m(practical radius of the wall) >13m(actual half-diameter of the ground surface) Maximum distance 20m(70% reflectivity)
Touch Accuracy	Typical value <2cm (6m wall, when lidar is well mounted) Typical value <3cm (10m wall, when lidar is well mounted)
Detecting frame rate	30FPS max(The value ranges from 10 to 30FPS)
Scanning Angle	270°

MULTI-TOUCH PARAMETERS

Mouse Simulaiton	Simulate mouse click, drag and move
Multi-touch	Support TUIO protocol, windows multi-point protocol, mouse pseudo multi-point function
Point support	The TUIO protocol has no point capwindows windows Multi-point support up to a maximum of 256 points
Application interface	Support Unity, C#, C++, processing, and many other software
Interactive Area	Support rectangular area,square area ,circle area,trapezoid area, polygon area, etc.Support overlapping area scanned by muti-lidar Support flat, tri-folded surface, L-shaped and curved surface (use muti-lidar)
Display device	Support projectors, single projection or multiple integration are supported Support LED screen, any size screen, splicing screen, floor tile screen, pixel screen, etc

Multi-lidar casecade	One computer can support more than 20 lidars casecade at the same time
----------------------	--

INTERFACE

Power supply interface	Ethernet, POE protocol power supply through ethernet cable
Data interface	Ethernet, POE protocol to transmit data through ethernet cable
Transmission distance	more than 100m
POE standard	IEEE 802.3AF
Network cablerequirements	CAT6 or batter cable

SOFTWARE AUXILIARY FUNCTION

Playlists	Can call interactive game program loop play, different programs can set different protocols and play time
Start up	With the computer running touch control system, computer shutdown automatically shut down the radar

OTHERS

Power dissipation	<5W
Operating temperature	-20°C ~ 60°C
Storage temperature	-25°C ~ 75°C

▶▶ DIMENSION



Figure 1: Product dimensions

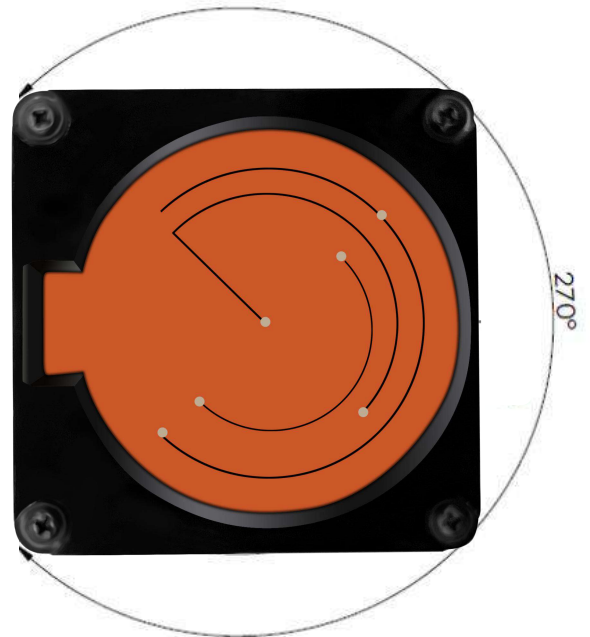
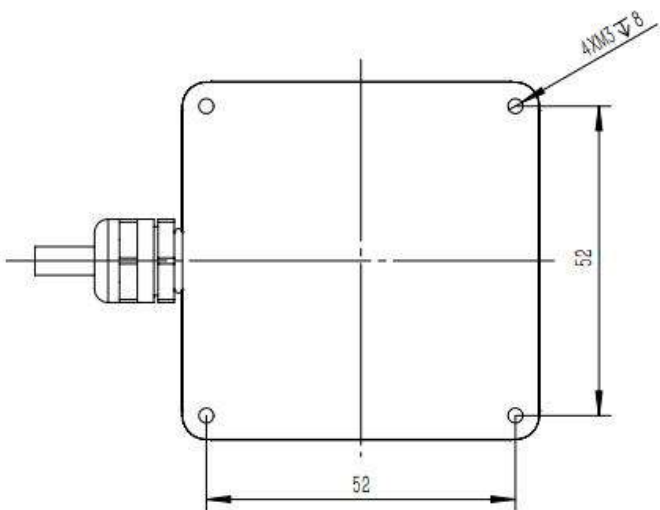
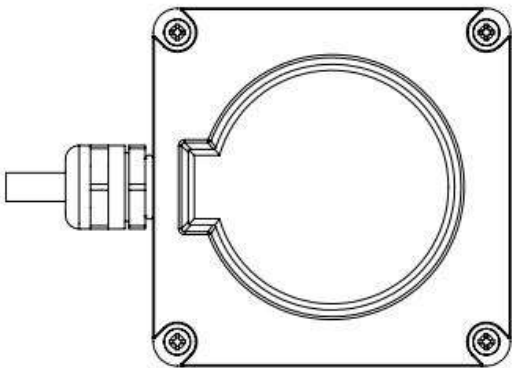
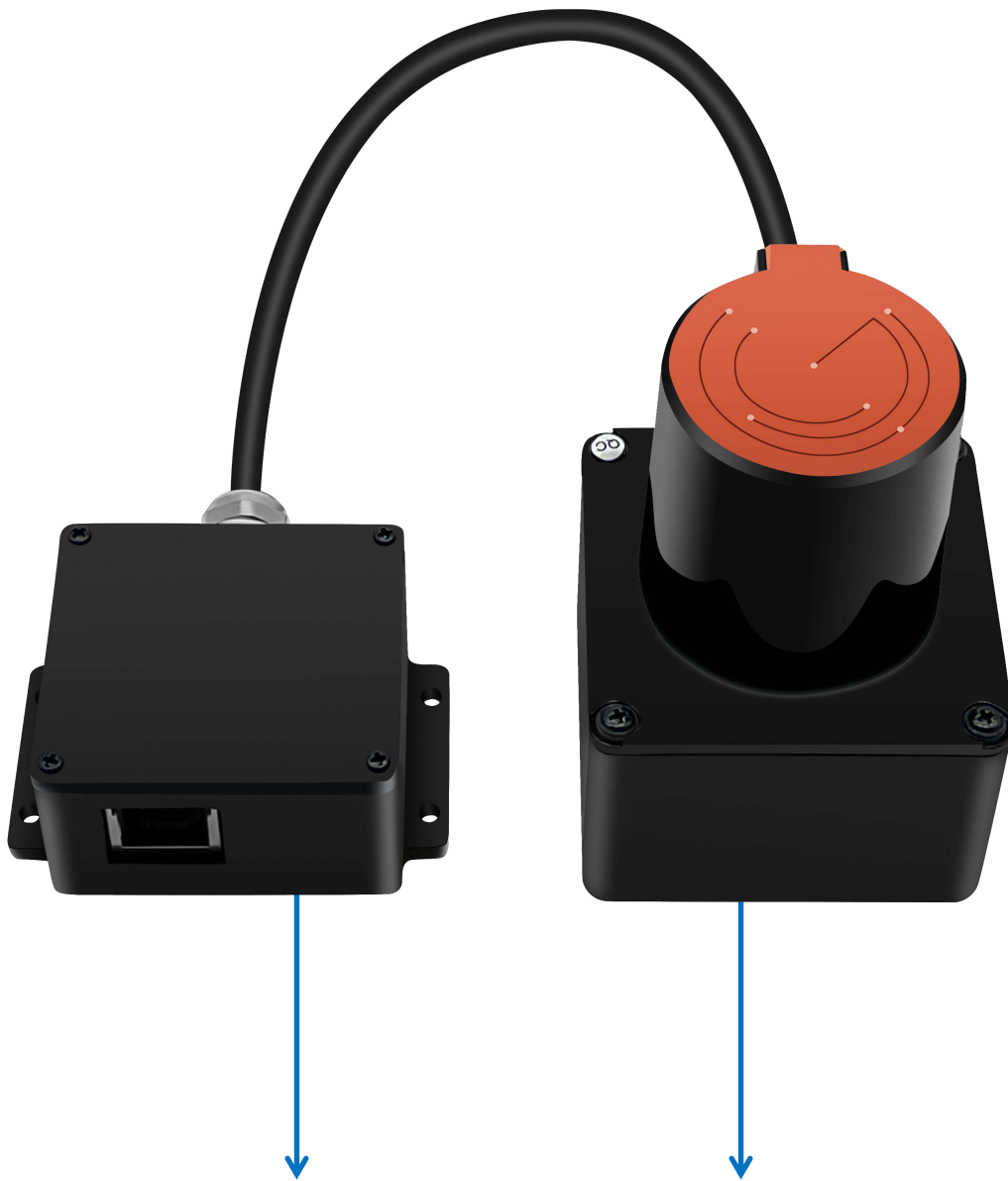


Figure 2: Range of working angles



PRODUCT



Junction box POELIDAR-F1

APPLICATIONS



Wall interaction



Floor interaction



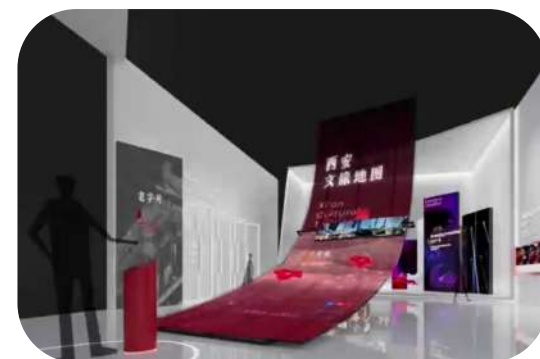
Interactive arc curtain projection



Immersive space



Touch graphite wall



Shaped projection Interactive

CONTACT US

Email: info@cpjrobot.com

Telephone: +86 21 51769038

Mobile Phone: +86 17501616271
/+86 18616152997

Address: Building NO.1, 70th Lane, Haijiliu Road, Pudong District, Shanghai, China